

### Herefordshire Rural Hub CIC

Agriculture House  
Beech Business Park  
Tillington Road  
Hereford, HR4 9QJ

Tel: **01432 268 428**

#### Co-ordinator

**Cathy Meredith**

Mobile: **07970 181628**

[hub@herefordshireruralhub.co.uk](mailto:hub@herefordshireruralhub.co.uk)

#### Administrator

**Frances Keogh**

[admin@herefordshireruralhub.co.uk](mailto:admin@herefordshireruralhub.co.uk)

#### Event bookings

Tel: **01432 353 465**

[bookings@herefordshireruralhub.co.uk](mailto:bookings@herefordshireruralhub.co.uk)

#### Hub Directors

Liz Lloyd (Chair)  
Christine Hope  
Cathy Meredith  
Chris England  
Russell Carrington

#### Hub Hot Group

*The Directors and .....*

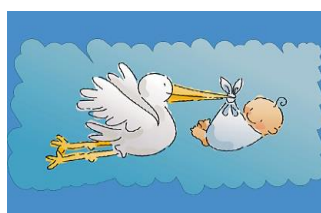
Jenny Beard  
Jon Clifford  
Ben Corbett  
Paul Crumpton  
Catherine Every  
Charlotte Gibb  
Clare Greener  
Rachel Jones  
Frances Keogh  
Andy Offer  
Julian Partridge  
Nick Read

#### Disclaimer

*The Herefordshire Rural Hub  
accepts no liability for  
any direct, indirect or  
consequential loss  
arising from any action  
taken in reliance on the  
information contained  
in this newsletter.*



*Cathy and Frances  
& the Herefordshire Rural  
Hub Directors  
would like to wish you a very  
Happy Christmas & New Year  
and thank you for your support  
through 2017*



**Congratulations!**  
To Christine Hope  
(just retired as Hub Chair)  
and her partner Colin,  
on the birth of their son Finn  
on 8<sup>th</sup> December.  
A little brother for Nola!

Please note that the hub office **will be closed**  
from Wednesday 20<sup>th</sup> December  
until Tuesday 2<sup>nd</sup> January.  
Cathy and Frances will have only limited  
access to emails during the holiday period.

***In order to help us reduce our costs,  
if you still receive this newsletter by POST,  
but are able to receive it by EMAIL  
(every month, plus other occasional updates)  
then please contact Frances by phone or email  
01432 268 428 [admin@herefordshireruralhub.co.uk](mailto:admin@herefordshireruralhub.co.uk)***

Copy deadline for the next newsletter is:-  
**15<sup>th</sup> January 2018**

**Herefordshire Rural Hub website.**  
Check it out at:- [www.herefordshireruralhub.co.uk](http://www.herefordshireruralhub.co.uk)  
If you have your own website please add a link to our website,  
and also share it via social media. Thank you.  
You can also follow us on [twitter@Hfds\\_RuralHub](https://twitter.com/Hfds_RuralHub)  
and on **Facebook** - search Herefordshire Rural Hub

## Annual Inventory of Sheep and Goats

**Wales** – you need to carry out your inventory on **1<sup>st</sup> January 2018** and record it in your flock register  
**England** – (for inventory as at 1<sup>st</sup> December) don't forget to return your form to DEFRA by 31<sup>st</sup> December

## New rules for farmers in England to help protect water quality – from April 2018

From 2<sup>nd</sup> April 2018 new rules for all farmers in England will be introduced to help protect water quality, by standardising the good farm practices that many are already performing and offering a new approach to regulation.

**In essence the rules require farmers to:**

- keep soil on the land;
- match nutrients to crop, and soil needs, and
- keep livestock fertilisers and manures out of the water.

To find out more go to:- [www.gov.uk/government/publications/farming-rules-for-water-from-april-2018](http://www.gov.uk/government/publications/farming-rules-for-water-from-april-2018) or visit GOV.UK. The Environment Agency will be explaining the new rules at the Green Futures meetings in the new year.

## Countryside Stewardship: detail of new simplified offers

Four new Countryside Stewardship offers will be introduced for farmers and land managers from the New Year to boost biodiversity and help protect and enhance farmland and the countryside. Significant improvements have been made to the scheme to make it simpler and easier for farmers & land managers to apply. The four new offers are **Online Arable Offer, Lowland Grazing Offer, Upland Offer** and **Mixed Farming Offer**. For more information go to [www.gov.uk/government/news/countryside-stewardship-detail-of-new-simplified-offers](http://www.gov.uk/government/news/countryside-stewardship-detail-of-new-simplified-offers)

## Update on TB licensing in England

**Farmers are now required to fill out an application form for a licence to move TB restricted cattle.**

This is merely an internal change to the way APHA processes licences with the aim of streamlining procedures by the development of an application form for licences.

More information at:- [www.tbhub.co.uk/guidance/trading-and-movement/licensing-of-tb-restricted-cattle-in-england/](http://www.tbhub.co.uk/guidance/trading-and-movement/licensing-of-tb-restricted-cattle-in-england/)

During the transitional period, the licensing team are guiding applicants by phone to help them fill in the written application.

The application form can be found at:-

[www.gov.uk/government/publications/tb-restricted-cattle-application-for-movement-licence-in-england](http://www.gov.uk/government/publications/tb-restricted-cattle-application-for-movement-licence-in-england)

## Herefordshire Grassland Society – January meeting

**“Technical Challenges and opportunities facing the livestock industry: a brave new world”**

**Speaker – Liam Sinclair**

**Tuesday 9<sup>th</sup> January, starting at 7.30pm**

At the New Market Canteen, The Livestock Centre, Roman Road, Hereford, HR4 7AN

Tea and coffee are served before meetings and light refreshments following.

Open to all. Annual membership of HGS only £10

**Secretary: Andrew Edwards MRICS (Sunderlands LLP) 07825 066 859 or 01432 356 161 [d.griffiths@sunderlands.co.uk](mailto:d.griffiths@sunderlands.co.uk)**

*This meeting is sponsored by RD Chesters Ltd [www.rdchesters.co.uk](http://www.rdchesters.co.uk) Tel 01885 400231*

**This is also the Silage Competition Results Night – Judge: Huw McConochie of Wynnstay**

**The next meeting is on Tuesday 13<sup>th</sup> February 2018**

## AHDB Cereals & Oilseeds

**Hereford Monitor Farm meeting: Are you fit for the future?**

**10<sup>th</sup> January 2018, 1pm – 4pm (lunch included)**

**at Bishops Frome Village Hall, Bishops Frome, Herefordshire, WR6 5AZ**

**Topic: Benchmarking**

Being part of the Hereford Monitor Farm arable benchmarking group allows you to share and compare data in a safe and secure environment at this AHDB facilitated group meeting. Farmbench is AHDB's online business tool that uses your cost of production figures to help you improve farm profitability and remain competitive.

**Only growers who submit their figures onto Farmbench are invited to attend this meeting.**

For more information on how to do this please contact **Richard Meredith**

**email: [richard.meredith@ahdb.org.uk](mailto:richard.meredith@ahdb.org.uk) or tel: 07717 493015**



**A clear solution  
for farmers**  
CATCHMENT SENSITIVE FARMING

## **The Science behind Healthy Soils**

**25<sup>th</sup> January 2018, 10am – 2pm** (light lunch provided)

**At Holme Lacy Campus, Holme Lacy HR2 6LL**

*(by kind permission of Daniel Seaborne, Herefordshire & Ludlow College)*

**Farm  
Herefordshire** 

**Come along to this free event for farmers to find out how to increase productivity on your farm by looking after and expanding the life in your soils.**

**Soil Scientist Matthew Shepherd** will explain the importance of good soil biology and how this can be maintained and improved in arable and grassland systems for optimum production.

**For more information please call Wayne Davies (01588 640 980), Rachel Bosanquet (07770 331 669) or James Griffiths (01746 718 032)**

To book your place, please email [bookings@herefordshireruralhub.co.uk](mailto:bookings@herefordshireruralhub.co.uk) or telephone **01432 353465**

## **The Big Farmland Bird Count is 9th to 18th February 2018**

**There will be a “Bird ID training day” for those wanting to take part**

**On Tuesday 23rd January 2018, 10am – 1.30 pm**

**at Fawley Court Farm, courtesy of JPF Clay Farms**

with Matt Willmott and Neil Harris (Kings)

**Booking for this training day is through GWCT only**

[www.gwct.org.uk/farming/big-farmland-bird-count/](http://www.gwct.org.uk/farming/big-farmland-bird-count/) or telephone **01572 718730** on weekdays.

Be part of a growing group of farmers recording the benefits of conservation work on their farms.

The Big Farmland Bird Count is organised by the Game and Wildlife Conservation Trust and takes just half an hour of your time to count the birds in one location on your farm. Over 50 Herefordshire farmers took part last year - some teaming up with local birders for support.

**Use the GWCT website above to register your interest in taking part in the count, receive recording forms etc.**

**For further information about the count please contact**

**Tony Norman [tony@theleen.co.uk](mailto:tony@theleen.co.uk) 01544 388510 or Caroline Hanks [caroline.hanks@farming4wildlife.co.uk](mailto:caroline.hanks@farming4wildlife.co.uk) 01981 251016**

## **The Eat Sleep Live Herefordshire 2018 Tourism & Leisure Forum**

**23<sup>rd</sup> January 2018**

**At The Canwood Gallery, Checkley**

Welcoming all regional tourism and leisure providers to this free event to discuss and hear about promotional opportunities for their Herefordshire business.

Hosted in the fascinating surroundings of Canwood Gallery at Checkley; a new not-for-profit art space and sculpture garden set up from Herefordshire farmer Stephen Dale's dream since receiving life-saving treatment at St Barts Hospital in the 1970s, when he was inspired by art at the Tate gallery.

**Guest speakers and information opportunities include:-**

- Clare Wichbold - Chair of **Hereford Three Choirs Festival**
- Catcher Media - **Herefordshire Life Through a Lens Film** about Herefordshire's hop heritage
- News of the **Weeping Window poppy exhibit** and how this will benefit tourism in 2018
- Discover how you can be involved and benefit from Membership with ESL and promotional plans for Herefordshire's visitor economy.
- Network with like-minded people in the Herefordshire tourism industry

A tour of Canwood Gallery with Hannah Dale and project architect Garry Thomas is offered at the end of the forum.

**No charge. Open to ESL Members and non-Members.**

**STRICTLY FOR TOURISM PROVIDER BUSINESSES including: Accommodation, Food & Drink (producers, retailers, restaurants etc), Attractions, Events, Activities, Art & Craft destinations, unless by invitation only.**

Contact [info@eatsleepliveherefordshire.co.uk](mailto:info@eatsleepliveherefordshire.co.uk) for more details and to register for attendance.

## **Green Futures 2018**

**Herefordshire – Tuesday 30<sup>th</sup> January**

**Shropshire – Thursday 1<sup>st</sup> February**

**Please see the attached flyer and booking form for full details**

## Herefordshire Meadows Forum - "Making Meadows Work and Pay"

Feb 3<sup>rd</sup> 2018, 9.45 for 10.00am until 2pm at Withington Village Hall, HR1 3PP

Rotational Grazing, Natural Flood management, Conservation Grazing, Pasture Fed systems - are they relevant to your farm business?

If you have permanent pasture, meadows and herbal leys or are considering how to manage them to benefit your farm business and help wildlife thrive come then come and hear speakers on:

- **The Economics of Permanent Grassland and Herbal Leys in livestock systems;** Jonty Brunyee - *farmer, Nuffield Scholar and farm business management lecturer at RAC*
- **The Value of Flood Plain Meadows for wildlife and natural flood management;** Emma Rotheroe - *Floodplain Meadows Partnership*
- **A Review of Conservation Grazing;** Jim Swanson, *farmer, adviser and lecturer at Hartpury UC*
- **Experiences of meadow restoration techniques in 2017** - Herefordshire Meadows members

All Welcome. A light buffet lunch will be provided at 1pm

**Booking is essential through Herefordshire Rural Hub**

Email: [bookings@herefordshireruralhub.co.uk](mailto:bookings@herefordshireruralhub.co.uk) or telephone **01432 353465**

Enquiries to Caroline Hanks [caroline.hanks@farming4wildlife.co.uk](mailto:caroline.hanks@farming4wildlife.co.uk) 07779 080940 and 01981 251016

[www.herefordshiremeadows.org.uk](http://www.herefordshiremeadows.org.uk)

## The Wye & Usk Foundation - How can we help?

- **Free farm visits** across Herefordshire to advise on water & soil health, metaldehyde use, yard infrastructure or any other issues you would like to discuss confidentially.
- **Three free soil tests**, including organic matter levels.
- **Free erosion risk maps** of your farm.
- **Stewardship applications** can be made by our experienced advisers for Mid-Tier & Capital Grants. It's never too early to think about next year's schemes!
- **Under-sowing Maize service** with inter-row precision drill

**For more information or to request a visit please contact one of the WUF advisers: Kate Adams (07766 330 959) Lucinda Lewis (07824 904 877); Mike Williams (07920 441 215); Tom Jolley (07545 253 155); Liz Price (07776 197 740)**

## Hereford & Worcester Chamber of Commerce

Wednesday 17 January, 7.30-9.30am **Hereford Networking Breakfast**

Burghill Valley Golf Club, Tillington Road, Burghill, Hereford HR4 7RW

**£17.50+VAT Members and £35.00+VAT Non-members**

Wednesday 24 January, 9.30-11.30am **Hereford HR Forum in association with Hewett Recruitment**

Hereford Business Solutions Centre - Building B, Units 1-4, Skylon Court, Rotherwas, Hereford, HR2 6JS

The HR Forum is aimed at HR representatives responsible for more than 10 employees. It is a confidential forum designed to allow you to share best practice and seek advice and support from peers in an open and supportive environment.

**FREE event for Chamber Members and clients of Hewett Recruitment**

**Contact: Yasmin Bent** Tel: **01905 673 600** Email: [yasminb@hwchamber.co.uk](mailto:yasminb@hwchamber.co.uk)

## The Marches Growth Hub

Providing advice, support, networking opportunities for businesses

Marches Growth Hub Calendar of Events [www.marchesgrowthhub.co.uk/calendar/](http://www.marchesgrowthhub.co.uk/calendar/)

Tel: **0345 6000 727** Email: [enquiries@marchesgrowthhub.co.uk](mailto:enquiries@marchesgrowthhub.co.uk) Website: [www.marchesgrowthhub.co.uk](http://www.marchesgrowthhub.co.uk)

## 2018 St Michael's Hospice Plant Fair - Sow a seed for St Michael's

We are looking for green-fingered supporters to help make our 2018 Plant Fair a blooming success by growing and donating plants. All the springtime greenery will be sold to help us raise the vital funds needed to continue providing the best possible care for patients and their families.

### How You Can Help

If you can grow six or more plants (either from seeds or plug plants) and would like to donate them to St Michael's, please contact Gaynor using the details below. You won't need to deliver your plants to the Hospice until a few days before the Fair in May 2018, and we may even be able to arrange for your donated plants to be collected by one of our Hospice driving volunteers. If you know your onions, we are also looking for volunteers who could give a few hours of their time during the Fair to help sell and answer questions about the plants on sale.

To start growing your support for St Michael's, call **Gaynor** on **01432 851 000** or email her at [gwarren@smhospicehereford.org](mailto:gwarren@smhospicehereford.org)

### Countryside Stewardship Grants for Woodland

Apply for support under Countryside Stewardship for woodland creation or improvement, tree health support, or to prepare a woodland management plan.

[www.gov.uk/government/collections/countryside-stewardship-woodland-support](http://www.gov.uk/government/collections/countryside-stewardship-woodland-support)

### Countryside Productivity Scheme

The RDPE Countryside Productivity Scheme provides funding for projects in England which improve productivity in the farming and forestry sectors and help create jobs and growth in the rural economy. It is administered by the Rural Payments Agency. Under the RDPE Countryside Productivity Scheme, there are grants for:

- **Improving forestry productivity (application deadline 3<sup>rd</sup> April 2018)**
- **Water resource management and reservoirs (application deadline 29<sup>th</sup> June 2018)**
- **Adding value to Agri-food products (application deadline 29<sup>th</sup> June 2018)**  
Grants to fund projects that improve the processing of primary agricultural products (i.e. Annex I products), benefiting the Agri-food supply chain which will in turn improve farm productivity.
- **Improving Farm Productivity (application deadline 3<sup>rd</sup> December 2018)**  
Grants to fund projects that improve farm productivity through the use of robotic equipment and systems to aid crop and livestock production; increasing the use of renewable energy produced on farm; the use of LED wavelength controlled lighting to aid crop production; more efficient use of livestock slurries and manures, and digestate.

For full details go to: [www.gov.uk/guidance/countryside-productivity-scheme](http://www.gov.uk/guidance/countryside-productivity-scheme)

The grants are funded by the European Agricultural Fund for Rural Development (EAFRD).

### The Prince's Countryside Fund

The Herefordshire Federation of Young Farmers' Clubs (HFYFC) working in partnership with Herefordshire Rural Hub have secured funding to provide support for training in a **rurally based career** to the end of December 2019. The funding is easy to access. All you need to do is select which course you would like to go on and complete the application form. If your application is approved you will be able to reclaim **70%** of your training and test costs, up to a maximum of **£250**. **Applicants must be a current member of HFYFC or a past HFYFC member (up to 40 yrs old).**

The fund will support training that will; **improve your employability, increase or improve your skill set, improve your safety or allow you to undertake extra responsibility in your current job.**



For further details and an application form please contact:

**Herefordshire Rural Hub CIC,**

Agriculture House, Beech Business Park, Tillington Road, Hereford, HR4 9QJ

Email: [admin@herefordshireruralhub.co.uk](mailto:admin@herefordshireruralhub.co.uk) Tel: **01432 268 428**

### Marches Building Investment Grant Scheme

For details go to the "Grants & Funding" section in "Useful Links" on the Herefordshire Rural Hub website at

<http://www.herefordshireruralhub.co.uk/useful-links-information/>

Or visit the website: <https://www.gov.uk/european-growth-funding>

For updates on other funding opportunities in the County, please visit <http://www.marchesgrowthhub.co.uk/> or contact the dedicated business support hotline on 0345 6000727.

### The Jack Hughes Fund - administered by Herefordshire Community Foundation

The Jack Hughes Fund will fund up to a maximum of 70% of the cost of training or costs up to a maximum of £150.

Funding will be limited to one family member/employee per annum

**The 2017 programme will be available for farmers aged over 40** and will specifically provide funds to support those who require:

- retraining or upskilling as they are leaving the industry
- training to support a new farm diversification enterprise
- training or business support for succession planning

**Funding will also be available for the following courses:**

- Safe use of pesticides – PA1, PA2, PA6
- Rodent control on farms
- Emergency first aid
- Food safety (Basic Food Hygiene)
- Chainsaw Maintenance & Cross Cutting (CS30)

**The funding is easy to access, but please note that the project will not support training retrospectively and places will be limited. Applicants need to be resident in Herefordshire.**

For further details or an application form contact:- **Herefordshire Community Foundation**

The Fred Bulmer Centre, Wall Street, Hereford, HR4 9HP. Email: [administrator@herefordshirecf.org](mailto:administrator@herefordshirecf.org) Phone: 01432 272550

Details are on the hub website at under Grants & Funding at <http://www.herefordshireruralhub.co.uk/useful-links-information/>





## Herefordshire LEADER programme 2015 – 2020

Contact the team on **01432 383023/39** or email [leader@herefordshire.gov.uk](mailto:leader@herefordshire.gov.uk)  
Full details are on the website at [www.herefordshire.gov.uk/leader](http://www.herefordshire.gov.uk/leader)

### What will the LEADER Programme do?

The main objective is to create jobs and economic growth by supporting rural businesses.

The programme themes are:

- Support for micro and small enterprises, including farm diversification
- Support for rural tourism
- Support for increasing farm productivity
- Support for increasing forestry provision
- Provision of rural services
- Support for cultural and heritage activities

Project applications will be eligible from:

- Micro businesses (0-9 employees) and small businesses (10-49 employees)
- Qualifying micro and small farming and forestry businesses
- Social enterprises
- Voluntary organisations
- Community groups
- Parish councils based in rural Herefordshire

### How will I know if our project is eligible?

LEADER funding contributes to around 40% of total project costs. Cash match funding will be needed for around 60% of each project. This is a predominantly capital grant programme. Training, skills and running costs are not eligible for funding. Business addresses must be registered in the Herefordshire LEADER area.

Each project should read the Herefordshire LEADER Handbook please follow link to our webpage for further details of eligible and ineligible costs: [www.herefordshire.gov.uk/leader](http://www.herefordshire.gov.uk/leader)

### What outputs could my project achieve?

An output is a measurable assessment of performance and success.

The main outputs for the program are: a) Jobs created & b) Businesses or holdings benefitting

**How much can we apply for?** Projects may be eligible for a grant of £2,500 up to a maximum of normally £35,000 to fund specific activities. Higher grants may be awarded to projects demonstrating exceptional output levels.

## The RDPE Growth Programme administered by DEFRA has live calls for applications for:-

### A Capital Grants pot of £7.2m is available to support tourism projects, food & drink processing activities and business development in the Marches LEP area

Three major strands include the new business development grants as well as funding for food and drink businesses that process agricultural and horticultural products, and a rural tourism grant for small businesses and farmers who want to diversify. Grants will usually be from £35,000 to a maximum of £170,000.

**\*NEW\*** the grant threshold for the food processing grants has been increased to £500,000 in The Marches.

**Tourism Infrastructure grants** to develop visitor attractions, tourist information, and recreational and small scale infrastructure projects including holiday accommodation.

**Food Processing grants** to grow and enhance the food and drink sector by supporting micro, small and medium-sized food and drink producers and processors looking to expand and create jobs.

**\*NEW\* Business Development grants** can fund new initiatives that will lead to economic growth or that will help farmers diversify into non-agricultural activities

**Expressions of Interest are now being accepted until 31<sup>st</sup> May 2018.**

*Grants funded by the European Agricultural Fund for Rural Development (EAFRD), part of the European Structural Investment Funds (ESIF).*

**Further information about making an application, forms and guidance, can be found online at:**

<https://www.gov.uk/government/publications/rdpe-growth-programme>

**The Marches Growth Hub** can provide advice & support to businesses wishing to apply for this and other funding.

Tel: **0345 6000 727** Email: [enquiries@marchesgrowthhub.co.uk](mailto:enquiries@marchesgrowthhub.co.uk) Visit their website at:- [www.marchesgrowthhub.co.uk](http://www.marchesgrowthhub.co.uk)

## News from the Blues – West Mercia Police Message from Paul Crumpton

### Farmers Grant Fraud Alert

BPS payments are being paid to farmers in from December 2017. Information on last year's payments are easily obtained via the government website allowing fraudsters to know when and how much potential targets will receive.

Fraudsters who purport to be a trusted senior colleague or established customer may request that you change their direct debit, standing order or amend a bank transfer so that the payment can be diverted to a bank account which is in control of the fraudster. Fraudsters will often make the request under the pretence of a highly sensitive or urgent transaction.

Contact may be made via phone or letter, but most commonly via email (personal or work address) used by the organisation or employee (which has either been spoofed or hacked). The fraudster then provides bank account details into which the monies should be paid.

**Protection & prevention advice**

- Ensure all staff, not just finance teams are aware of this fraud.
- Always verify email payment changes to financial agreements with the organisation directly using established contact details you have on file. If called ask the caller to give you a main switchboard number for you to be routed back to them. Alternatively, hang up and call them back using established contact details you have on file.
- Have a system in place which allows staff to properly verify contact from their CEO or senior members of staff; for example having two points of contact so that the staff can check that the instruction which they have received from their CEO is legitimate.
- Always review requests to change "one off" payment requests. Check for inconsistencies or grammatical errors, such as a misspelt company name or a slightly different email address. Ensure computer systems are secure and that antivirus software is up to date.

**Herefordshire & Ludlow College**

Tel: **0800 032 1986** Email: [enquiries@hcollege.ac.uk](mailto:enquiries@hcollege.ac.uk) Website: [www.hcollege.ac.uk](http://www.hcollege.ac.uk)

<u>Course</u>	<u>Dates</u>
<b>Chainsaw Maintenance &amp; Cross Cutting 2 days + assesement</b>	23 <sup>rd</sup> – 24 <sup>th</sup> January      5 <sup>th</sup> – 6 <sup>th</sup> March
<b>Felling &amp; Processing Trees up to 380mm 3 days + assessment</b>	12 <sup>th</sup> – 14 <sup>th</sup> February
<b>Chainsaw Maintenance &amp; Operations Occasional User 2 days</b>	19 <sup>th</sup> -20 <sup>th</sup> February
<b>PA2 Ground Crop Sprayers, incorporating PA1 Safe Use of Pesticides 2 days + assessment</b>	6 <sup>th</sup> & 13 <sup>th</sup> February
<b>PA6 Handheld Applicators, incorporating PA1 Safe Use of Pesticides 2 days + assessment</b>	6 <sup>th</sup> & 7 <sup>th</sup> February      13 <sup>th</sup> – 14 <sup>th</sup> March
<b>Tractor Driving 16yrs and over</b>	10 <sup>th</sup> – 11 <sup>th</sup> March
<b>Tractor Driving 13-16yrs</b>	19 <sup>th</sup> – 20 <sup>th</sup> February
<b>Animal Care – How to create a Bio-Active enclosure</b>	17 <sup>th</sup> February
<b>Animal Care – Introduction to Reptile &amp; Amphibian keeping</b>	20 <sup>th</sup> January
<b>Animal Care – Intermediate Reptile &amp; Amphibian keeping</b>	23 <sup>rd</sup> February

**All courses take place at Holme Lacy Campus, HR2 6LL**

**Other courses arranged subject to demand**

Chainsaw courses, ATV handling, Rodent Control, Safe use of Aluminium Phosphide,  
Forklift Truck Operations, Shooting with Shotguns  
*Please contact the enquiries line for further information*

**Sastak 7Y**

Please contact Paula Strangwood Tel: **07717 895 009** Email: [paula@sastak7y.com](mailto:paula@sastak7y.com)

<u>Course</u>	<u>Dates</u>	<u>Venue</u>
<b>City &amp; Guilds Safe Use of Pesticides PA1</b>	30 <sup>th</sup> January	Wharton Court, Leominster
<b>City &amp; Guilds Ground Crop Sprayer PA2</b>	31 <sup>st</sup> January	Wharton Court, Leominster
<b>City &amp; Guilds Hand-Held Applicator PA6</b>	1 <sup>st</sup> February	Wharton Court, Leominster
<b>Lantra Site Safety Awareness</b>	10 <sup>th</sup> January	Wharton Court, Leominster
<b>Emergency First Aid at Work</b>	26 <sup>th</sup> January      1 <sup>st</sup> February	Wharton Court, Leominster
<b>First Aid at Work</b>	29 <sup>th</sup> – 31 <sup>st</sup> January	Wharton Court, Leominster
<b>First Aid at Work refresher</b>	16 <sup>th</sup> – 17 <sup>th</sup> January	Wharton Court, Leominster
<b>Lantra Chainsaw Maintenance &amp; Cross Cut (2 days)</b>	17 <sup>th</sup> – 18 <sup>th</sup> January	Wharton Court, Leominster
<b>City &amp; Guilds Safe Use of Pesticides PA1</b>	17 <sup>th</sup> January	Harper Adams, Shropshire
<b>City &amp; Guilds Ground Crop Sprayer PA2</b>	18 <sup>th</sup> January	Harper Adams, Shropshire
<b>City &amp; Guilds Handheld Applicator PA6</b>	19 <sup>th</sup> January	Harper Adams, Shropshire

**New Year dates available for full or refresher courses in:-** Lifting Equipment such as Telescopic, Fork lift trucks

<> Health & Safety courses e.g. First Aid, AED, Manual Handling and Fire Awareness

**If you are interested in any courses that are not listed please contact Paula.**

## Wyvern Training Ltd

Email: [enquiries@wyverntrainingservices.com](mailto:enquiries@wyverntrainingservices.com) Tel: 07468 465 303

Course	Dates	Venue
ATV Sit Astride refresher	19 <sup>th</sup> January	To Be Confirmed  Please contact Wyvern Training
Rough Terrain Telescopic Lift Truck refresher	18 <sup>th</sup> January	
PA1 Safe Use of Pesticides ( <i>C &amp; G assessment arranged subsequently</i> )	23 <sup>rd</sup> January	
Scissor Lift – Safe use & operation	15 <sup>th</sup> January	
Manual Handling Awareness – ½ day	16 <sup>th</sup> January	
Industrial Masted Lift Trucks refresher	17 <sup>th</sup> January	
Abrasive Wheels	17 <sup>th</sup> January	

### Courses planned for January / February

First Aid Level 2 & 3 courses & refreshers <> Food Safety Level 2 <> Managing Health & Safety and Risk Assessment  
Safe use of Aluminium Phosphide <> Rodent control on farms <> Chainsaws – basic felling techniques (up to 200 mm)  
Chainsaw Cross Cutting and Maintenance <> ATV Sit-astride refresher & novice <> HACCP's Level 2  
PA3a & PA3b Air Assisted Applicators <> Rough Terrain Telescopic refresher & novice <> Industrial Masted refresher & novice  
**Please get in touch to discuss these or any other training requirements**

### North Shropshire College Courses

- **Level 2 Principles of Safe Handling and Application of Pesticides PA1**  
Walford Campus SY4 2HL 8th January 2018  
Shipleigh Campus WV6 7EJ 29th January 2018  
**Level 2 Award in the Safe Application of Pesticides using Pedestrian Hand Held Equipment PA6a unit 151.**  
Shipleigh Campus WV6 7EJ 30th January 2018
- **Level 2 Award in the Safe Application of Pesticides Using Self Propelled, Mounted, Trailed Horizontal Boom Sprayers Pa2 Unit 111**  
Walford Campus SY4 2HL 9th January 2018
- **NPTC Level 2 Award in the Safe Use of Pesticides for Vertebrate Pest Control for Rats and Mice**  
Walford Campus SY4 2HL 23rd January 2018
- **NPTC Level 2 Award in the Safe Use of Aluminium Phosphide for Vertebrate Pest Control**  
Walford Campus SY4 2HL 16th January 2018

Contact: Sue Martyn, Rural Skills Department, North Shropshire College 01939 262102

**For the full list of useful website links/contacts/information on the Herefordshire Rural Hub website visit the "Useful Links" page on the Herefordshire Rural Hub Website**  
<http://www.herefordshireruralhub.co.uk/useful-links-information/>

### Are you unsure about details of rules or regulations? Need help with understanding record keeping?

You may be cautious about asking for help from a regulatory body such as the Environment Agency, but they are always willing to advise and help you. Herefordshire Rural Hub can help signpost which organisation can help you. Don't hold back from asking for help. It's free and could save your Basic Payment.

- **Farming Advice Service** Email: [advice@farmingadvice.org.uk](mailto:advice@farmingadvice.org.uk) website: [www.farmingadvice.org.uk](http://www.farmingadvice.org.uk)  
The Rural Services Helpline 03000 200 301 provides a single number for all **Farming Advice Service, Rural Payments Agency or Animal and Plant Health Agency (APHA)** enquiries. It is open from Monday to Friday, 8.30am till 5pm.
- **Natural England** 0300 060 1115 [enquiries@naturalengland.org.uk](mailto:enquiries@naturalengland.org.uk)
- **Environment Agency** Sharon Chisholm (Tues, Weds, Thurs) Tel: 02030 251692  
Email: [sharon.chisholm@environment-agency.gov.uk](mailto:sharon.chisholm@environment-agency.gov.uk)
- **N.F.U.** (Herefordshire) Clare Greener Tel: 01432 807464 Mob: 07771 626080 Email: [Clare.Greener@nfu.org.uk](mailto:Clare.Greener@nfu.org.uk)
- **C.L.A.** Richard Goodwin 01785 337010 [richard.goodwin@cla.org.uk](mailto:richard.goodwin@cla.org.uk)
- **Animal Health & Trading Standards** (Herefordshire) Tim Barber Tel: 01432 383145 Fax: 01432 383169

### Could you or someone you know benefit from support:-

- **Farming Community Network** 03000 111 999 website: <http://www.fcn.org.uk/>
- **Royal Agricultural Benevolent Institution (RABI)** 0808 2819490 website: <http://www.rabi.org.uk/>
- **Borderlands Rural Chaplaincy** 07958 591 646 website: [www.borderchaplain.org](http://www.borderchaplain.org)
- **You Are Not Alone (YANA)** 0300 323 0400 website: [www.yanahelp.org/](http://www.yanahelp.org/)
- **Farming Help** 0845 367 9990 website: [www.farminghelp.org.uk/](http://www.farminghelp.org.uk/)



- **Addington Fund** 01926 620 135 website: [www.addingtonfund.org.uk/](http://www.addingtonfund.org.uk/)
- **Herefordshire Samaritans** website: [www.samaritans.org/branches/herefordshire-samaritans](http://www.samaritans.org/branches/herefordshire-samaritans)

## ***Herefordshire Rural Hub – Classified Page***

Would you like to place an Advert, for e.g. **Services / Job Vacancy / Items for sale / looking for work etc ?**

Then please contact **Frances** for full details of the advertising packages on our **Classified Page**

[admin@herefordshireruralhub.co.uk](mailto:admin@herefordshireruralhub.co.uk) **01432 268428**

[www.herefordshireruralhub.co.uk/advertise-herefordshire-rural-hub-website/](http://www.herefordshireruralhub.co.uk/advertise-herefordshire-rural-hub-website/)

### ***Disclaimer***

The Herefordshire Rural Hub accepts no liability for any direct, indirect or consequential loss arising from any action taken in reliance on the information contained in this newsletter.